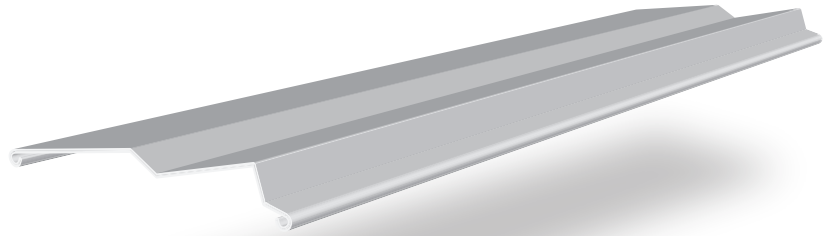


# PERSYVEX Z90

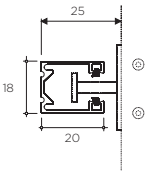
Veneciana exterior

## ■ CARACTERÍSTICAS TÉCNICAS

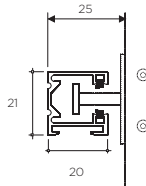
|                             |  |
|-----------------------------|--|
| Material                    |  |
| Espesor                     |  |
| Superficie de cobertura     |  |
| Espesor nominal             |  |
| Lamas por metro de altura   |  |
| Ancho maximo aconsejado     |  |
| Densidad del poliuretano    |  |
| Embalaje                    |  |
| Largo de fabricacion        |  |
| Peso por metro cuadrado     |  |
| Eje minimo de enrollamiento |  |



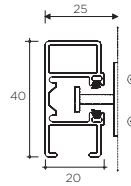
## ■ COMPATIBILIDAD GUÍAS



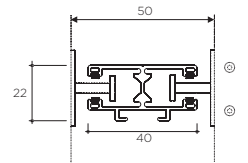
**Guía Lateral  
20 x 20 mm**



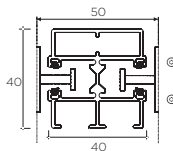
**Guía Frontal  
20 x 22 mm**



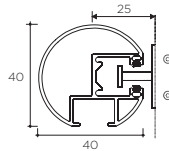
**Guía Frontal  
20 x 40 mm reforzada**



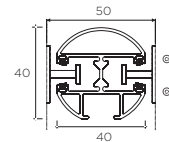
**Guía Frontal Doble  
40 x 22 mm**



**Guía Frontal Doble  
40 x 40 mm reforzada**



**Guía Redonda  
40 mm reforzada**



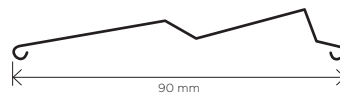
**Guía Redonda Doble  
40 mm reforzada**

## ■ TABLA DE REPLIEGUE

|                        |    |     |     |     |     |     |     |     |     |     |     |     |     |     |     |     |     |     |     |     |
|------------------------|----|-----|-----|-----|-----|-----|-----|-----|-----|-----|-----|-----|-----|-----|-----|-----|-----|-----|-----|-----|
| <b>Repliegue (cm)</b>  | 15 | 17  | 18  | 19  | 21  | 22  | 23  | 24  | 26  | 26  | 28  | 29  | 30  | 32  | 33  | 35  | 37  | 39  | 42  | 43  |
| <b>Altura luz (cm)</b> | 80 | 100 | 120 | 140 | 160 | 180 | 200 | 220 | 240 | 260 | 280 | 300 | 320 | 340 | 360 | 380 | 400 | 420 | 440 | 450 |

## ■ RESISTENCIA AL VIENTO

|             |                    |                  |                  |
|-------------|--------------------|------------------|------------------|
|             | <b>Ancho</b>       |                  |                  |
|             | <b>Hasta 2,0 m</b> | <b>2,0 4,0 m</b> | <b>4,0 4,5 m</b> |
| <b>Km/h</b> |                    |                  |                  |



Organismo  
Notificado Nº 1668